

# Plain | Unspecified | Saw Tooth Cake Stand | Collection | 001

## Shape Name

Plain

## Potter Name

Unspecified

## Photo Type

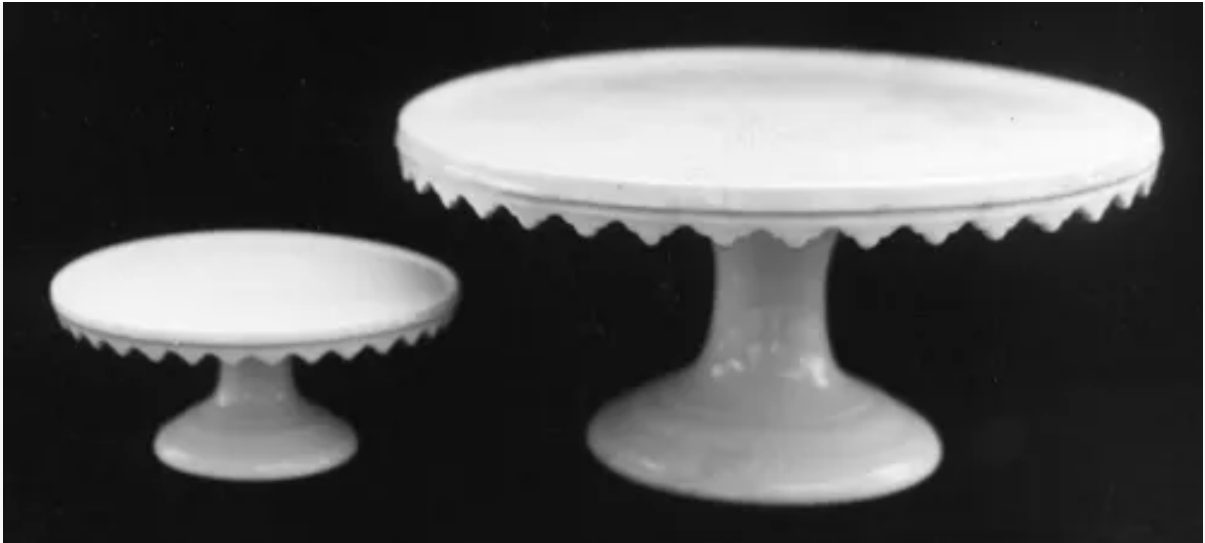
Collection - Photo

## Item

Saw Tooth Cake Stand - Various Sizes

## Notes

*The cake stands are 6" and 11" in diameter. The 11" cake stand is unmarked. The 6" cake stand is marked "T. G. & Co."*



[Enlarge Image](#)

## **Associated Images**



**Plain | T. G. & Co. | Saw Tooth  
Cake Stand | Mark | 002**



**Plain | Unspecified | Saw Tooth  
Cake Stand | ItemDrw | 001**