

Plain Berlin

Collector Shape Name: Plain Berlin

Circa: 1860s

Shape Characteristics

Body

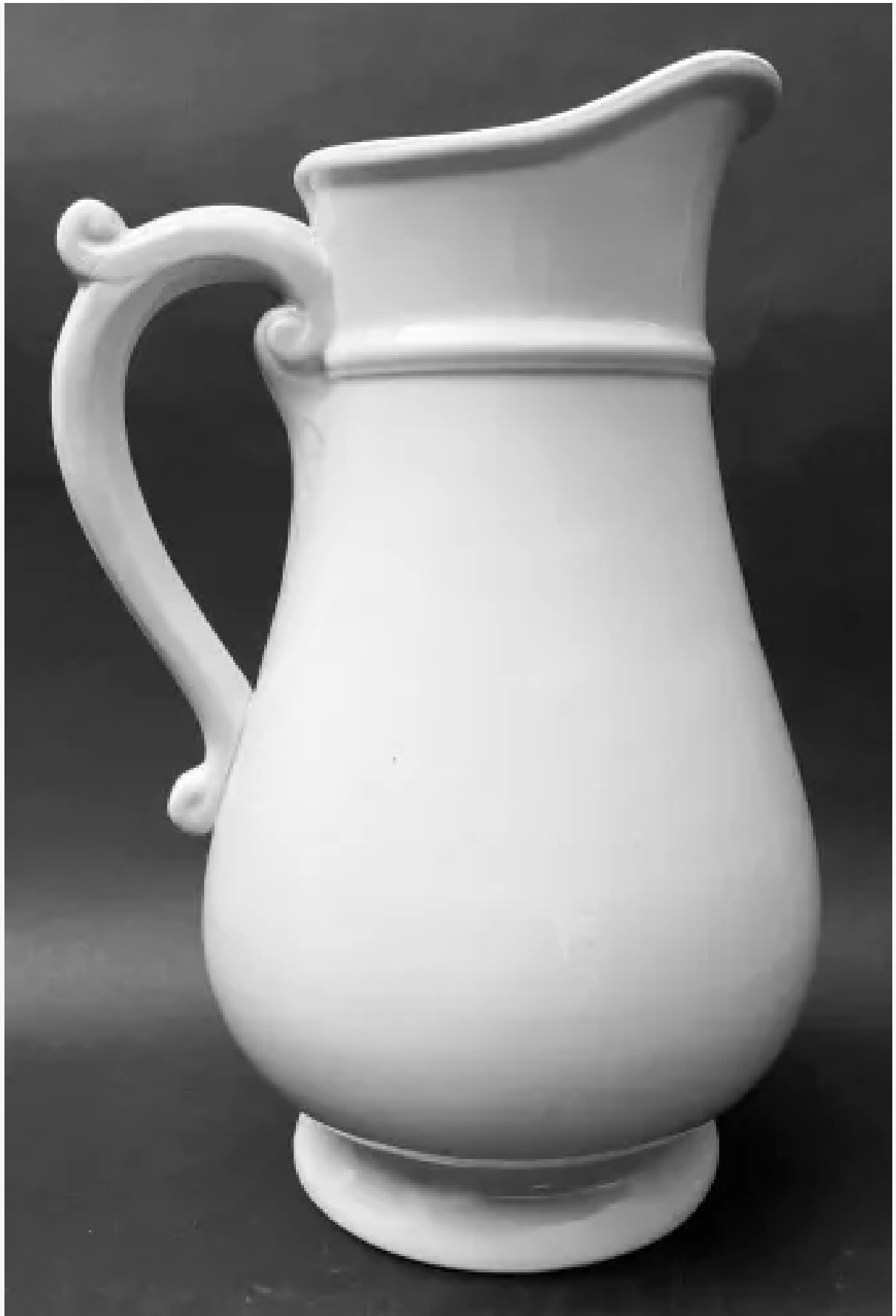
Plain Round & Oval

Handle

C-Shape with Thumb Rest

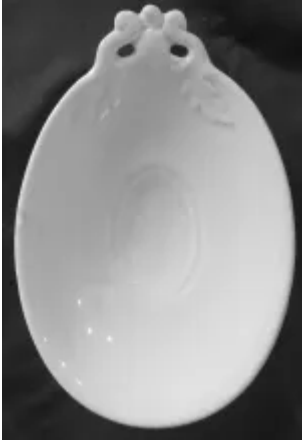
Finial

Loop and Strap Finial



[Enlarge Image](#)

Associated Images



Potters Who Made This Shape



Elliot, Liddle & Son

Kew Registrations

Tureen



- Patent Registration # 173799 Date: April 21, 1864
- Liddle Eilon and Son Dale Hall Pottery Longton Staffordshire
- Plain Beefe shape vegetable tureen

Apr 21, 1864

Q preview