

Henry Burgess

POTTERY LOCATIONS

Kilncroft Works, Chapel Street/Sylvester Square

Start Year

1864

End Year

1892

Country

England

Location

Burslem



[Enlarge Image](#)

POTTER TRANSITIONS

Former Potter Name: T. & R. Boote (& Co.)
Years: From 1842 to 1864

Related Shapes



Beaded Handle



Cable and Bar



Chrysanthemum



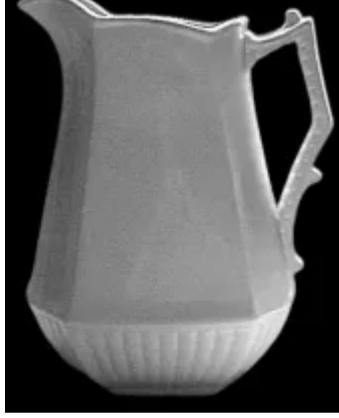
Grape Cluster with Chain



Hyacinth



Late Square and Octagon



Lily



Lily Shape (Calla Lily)



One Large Two Small Ribs



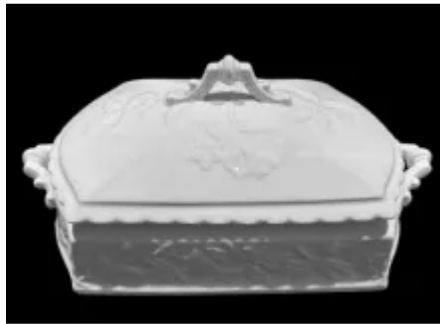
Plain



Plain Uplift



Square Ridged



Unknown Tableware