

Hebe Shape

Potter Shape Name: Hebe Shape

Circa: 1840s, 1850s

Shape Characteristics

Body

Leaf ' Paneled Round

Handle

C-Shape without Thumb Rest

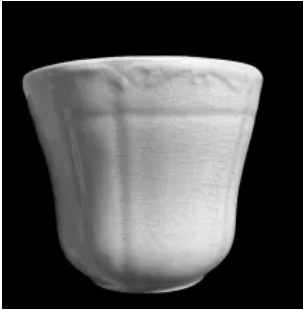
Finial

Finial ' Ring Finial



[Enlarge Image](#)

Associated Images







Potters Who Made This Shape



Alcock, John

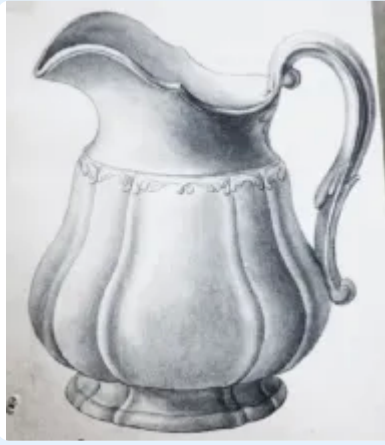


Wedgwood, Josiah & Sons

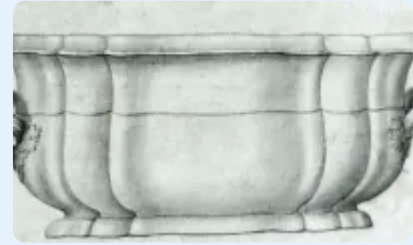
Kew Drawings | John Alcock



Gravy Boat and Underplate



Creamer or Cream Pitcher



Foot Bath



Teapot or Coffee Pot Base and Lid



Sugar Bowl with Lid



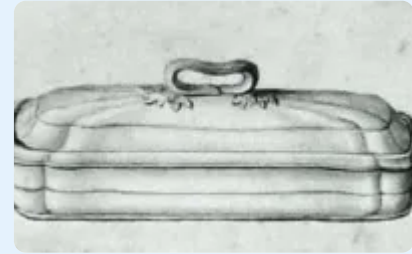
Chamber Pot Base and Lid



Waste or Slop Jar Base and Lid



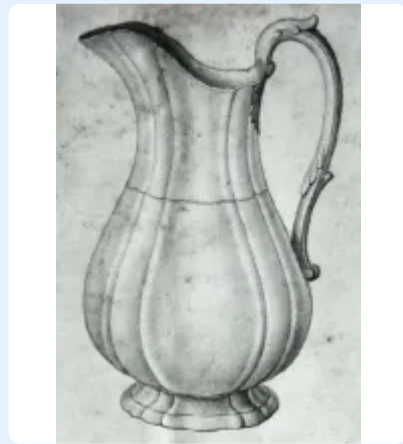
Wash Basin



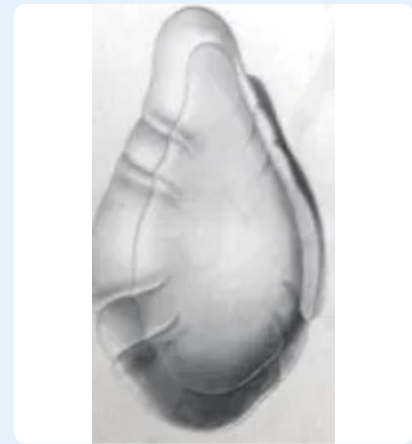
Brush Tray Base and Lid



Pitcher - Table - Various Sizes



Ewer



Relish Dish



**Sauce or Soup Tureen
Base, Lid, and Underplate**

Kew Registrations

Ewer



- Patent Registration # 36447 Date: August 1, 1846
- "Hebe"
- Hebe Shape ewer, Josiah Wedgwood & Sons, Etruria

Aug 1, 1846

[Q preview](#)

Basin



- Patent Registration # 36448 Date: August 1, 1846
- "Hebe"
- Hebe Shape basin, Josiah Wedgwood & Sons, Etruria

Aug 1, 1846

[Q preview](#)

Jug



- Patent Registration # 91122 Date: May 7, 1853
- Design for a Jug. This Jug to be used in several sizes in China and Earthenware by John Alcock of Cobridge, Staffordshire
- Hebe Shape jug

May 7, 1853

[Q preview](#)

Tea Service



- Patent Registration # 91123 Date: May 7, 1853
- Design for a Tea Service by John Alcock Cobridge Staffordshire
- Hebe Shape tea service

May 7, 1853

[Q preview](#)

Dinner Service



- Patent Registration # 91124 Date: May 7, 1853
- [No information on document image.]
- Hebe Shape dinner service, John Alcock Cobridge

May 7, 1853

[Q preview](#)

Toilet Service



- Patent Registration # 93536 Date: December 6, 1853
- Registered by John Alcock Cobridge Staffordshire, Design for a Toilet Service in different sizes
- Hebe Shape toilet service

Dec 6, 1853

[Q preview](#)