

# Lily Pad

**Collector Shape Name: Lily Pad**

**Circa: 1850s**

## **Shape Characteristics**

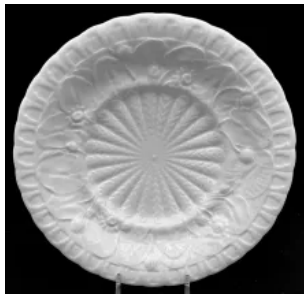
**Body**

**Pad** , Ribbon Scroll



[Enlarge Image](#)

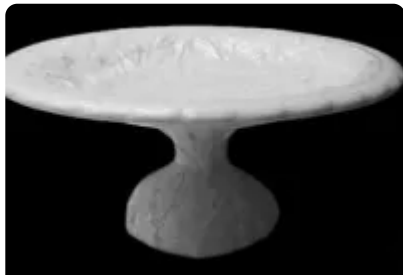
## **Associated Images**



## Potters Who Made This Shape



**Morley, Francis (& Co.)**



**Pankhurst, J. W. (& Co.)**

## **Kew Drawings | Francis Morley (& Co.)**



**Vegetable Tureen Base  
and Lid**



**Sauce or Soup Tureen  
Base and Lid**

## **Kew Registrations**

### Tureen



- Patent Registration # 73293 Date: November 20, 1850
- [No information on document image.]
- Lily Pad shape tureen, F. Mosley & Co., Shelton

**Nov 20, 1850**

**Q preview**

### Tureen



- Patent Registration # T4139 Date: December 5, 1850
- [No information on document image.]
- Lily Pad shape vegetable tureen, F. Mosley & Co., Shelton

**Dec 5, 1850**

**Q preview**