

Samuel Alcock & Co.

POTTERY LOCATIONS

Hill (Top) Pottery, High Street

Start Year

1833

End Year

1859

Country

England

Hill Works or Royal Victoria Pottery, Liverpool Road

Start Year

1833

End Year

1859

Country

England



IMPERIAL
IRONSTONE CHINA
SAM^L ALCOCK & CO

[Enlarge Image](#)

POTTER TRANSITIONS

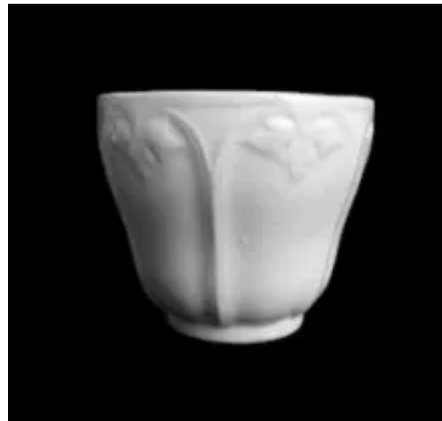
Former Potter Name: Ralph Hall
Years: From 1820 to 1826

Subsequent Potter Name: J. Duke & Nephews
Years: From 1860 to 1863

Related Shapes



Atlantic Shape



Framed Leaf



Gothic



Grape Octagon



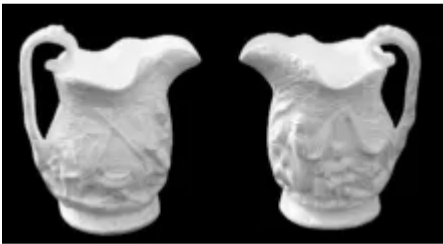
Northwinds Ivy



Stafford Shape



Unknown Specialty Items



Unknown Tableware