

Boote 1851 | T. & R. Boote (& Co.) | Stew or Chowder Tureen Base, Lid, and Ladle | Item | 001

Shape Name

[Boote 1851](#)

Potter Name

[Boote, T. & R. \(& Co.\)](#)

Photo Type

Item - Photo

Item

Stew or Chowder Tureen Base, Lid and Ladle

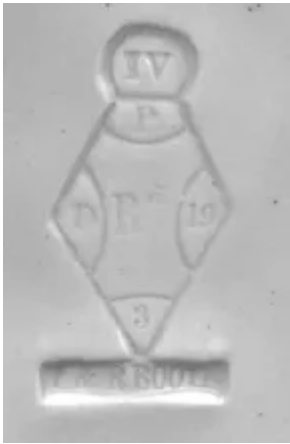
Kew Registration

[80629](#)



[Enlarge Image](#)

Associated Images



**Boote 1851 | T. & R. Boote (&
Co.) | Stew or Chowder Tureen
Base, Lid, and Ladle | Mark |
002**