

Arthur J. Wilkinson (Late Richard Alcock)

POTTERY LOCATIONS

Central Pottery, Stafford Street (Market Street)

Start Year

1885

End Year

1898

Country

England

Church Yard Works

Start Year

1887

Country

England

Royal Staffordshire Pottery

Start Year

1898

End Year

1965

Country

England



[Enlarge Image](#)

POTTER TRANSITIONS

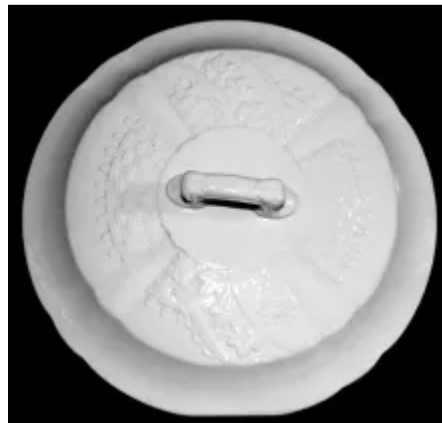
Former Potter Name: Wilkinson & Hulme
Years: From 1881 to 1885

Subsequent Potter Name: W. R. Midwinter, Ltd.
Years: From 1965 to 1968

Related Shapes



Basketweave with Band



Basketweave with Band and Ribs



Bow Knot



Daisy 'n Chain



Hawthorn



Maidenhair Fern



Ribbed Fern



Sunburst