

Thomas Till & Sons

POTTERY LOCATIONS

Stych Pottery, Liverpool Road

Start Year

1850

End Year

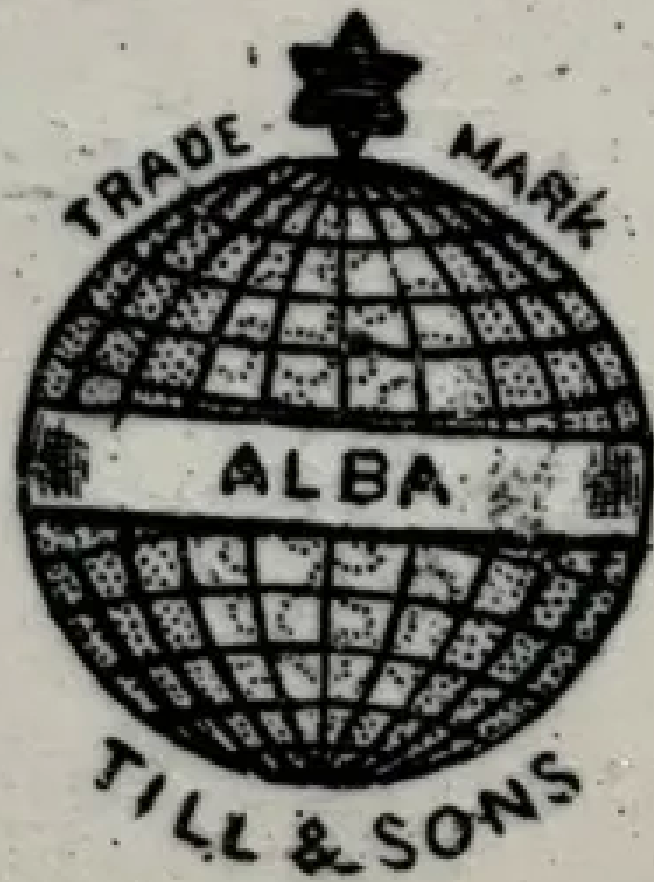
1928

Country

England

Location

Burslem



[Enlarge Image](#)

POTTER TRANSITIONS

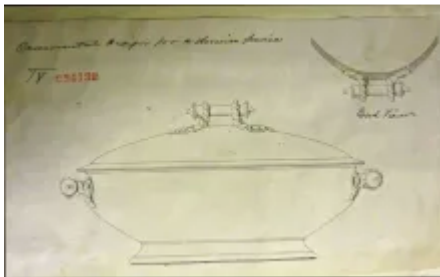
Former Potter Name: Barker & Till

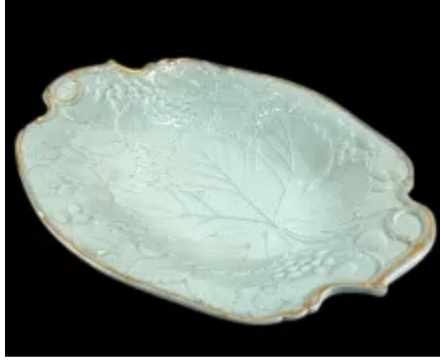
Years: From 1846 to 1850

Subsequent Potter Name: The Pearl Pottery Ltd.

Years: From 1930 to 1942

Related Shapes





Fruit Garden

Cable and Bar



Unknown Tableware